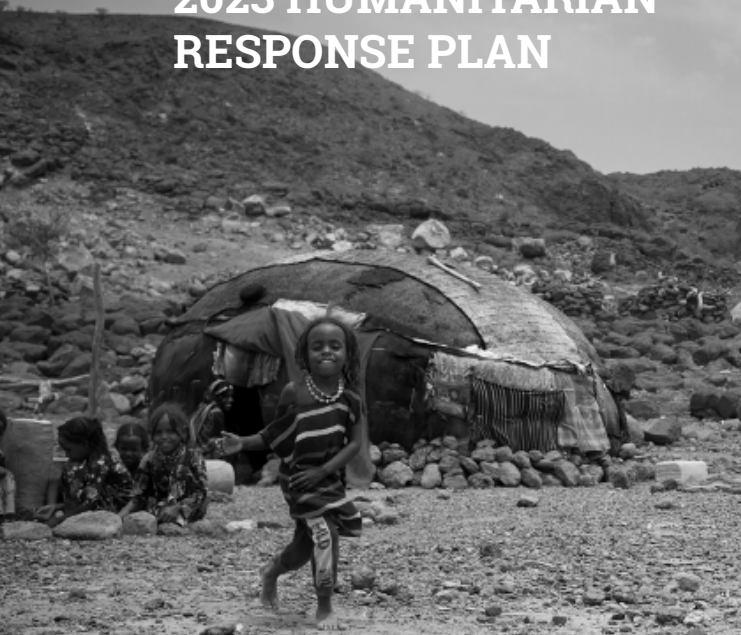


ETHIOPIA

2023 HUMANITARIAN RESPONSE PLAN



20.1 MILLION PEOPLE
FOOD TARGETED



US\$2.16 BILLION
TOTAL FOOD REQUIREMENTS



4.4 MILLION PEOPLE
MULTI SECTORAL NON-FOOD TARGETED



US\$1.83 BILLION
TOTAL NON-FOOD REQUIREMENTS



US\$3.99 BILLION
TOTAL REQUIREMENTS

OVERVIEW

The 2023 Humanitarian Response Plan (HRP) appeals for US\$3.99 billion to assist more than 20 million people affected by conflict, violence and natural hazards across Ethiopia, including 13 million people suffering from the most severe drought impact in southern and eastern Ethiopia. The response will focus on most vulnerable people across highly affected areas, including internally displaced people (IDPs), returning IDPs, and affected non-displaced people. Two thirds of the targeted people are women and children.

In addition to integrating gender and age considerations to effectively reach all segments of targeted populations, the Plan will ensure advocacy and implementation of collective responsibilities towards accountability to affected populations (AAP) so that community voices

inform decision-making. This will be streamlined across all sectors and response. While focusing on responding to the multiple, and very often overlapping, humanitarian crises across the country, this HRP will strongly advocate for and contribute to support and build linkages towards recovery and resilience programming where possible, including but not limited to supporting safe and dignified returns and restoration of livelihoods and of basic social services.

Humanitarian organizations, including national and international non-governmental organizations as well as the United Nations agencies, worked in consultation and collaboration with authorities at local and national levels to prepare this Plan. It will guide collective and coordinated multi-sector humanitarian action throughout the year.

STRATEGIC OBJECTIVES

- 1 Reduce morbidity, mortality, and suffering due to multiple shocks for 22.6 million of the most vulnerable people by the end of 2023.
- 2 Provide protection and safe access to critical, integrated and inclusive basic services to enable 8.8 million most vulnerable people to meet their basic needs by the end of 2023.
- 3 Support 9.4 million vulnerable people to start recovering from crisis and natural hazards, through targeted programming to support rebuilding coping capacities and livelihoods and strengthen linkages with development actors by the end of 2023.

ESTIMATES FOR DROUGHT AFFECTED AREAS

13.0 MILLION TARGETED
US\$2.05 BILLION REQUIRED

PLANNED RESPONSE (BY ZONE)

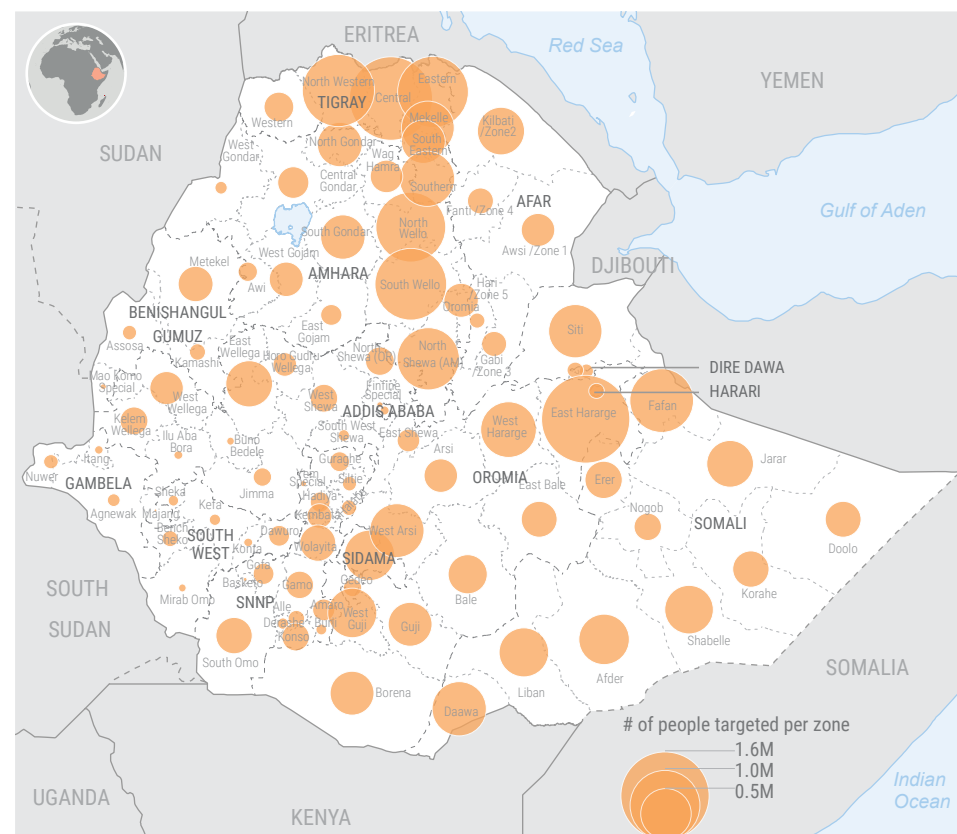


Photo: Kori Town, Afar Region. Children from a community in Kori Town play among their homes. Since the drought struck nearly a year ago, there has been a high rate of malnutrition among the community, especially among children. Credit: Liz Loh-Taylor for OCHA Ethiopia



Agriculture

17.8M

People in need



9.1M

People targeted

276.5M

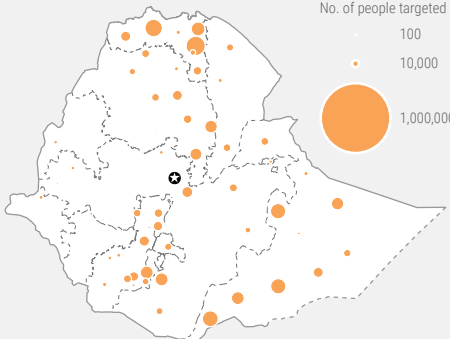
US\$ required

No. of people targeted

100

10,000

1,000,000



Agriculture cluster partners in 2023 are planning to:

- Protect and sustain core agricultural livelihoods of households
- Enhance vulnerable households' ability to withstand recurrent and future shocks

Camp Coordination and Camp Management

2.3M

People in need



1.1M

People targeted

42.3M

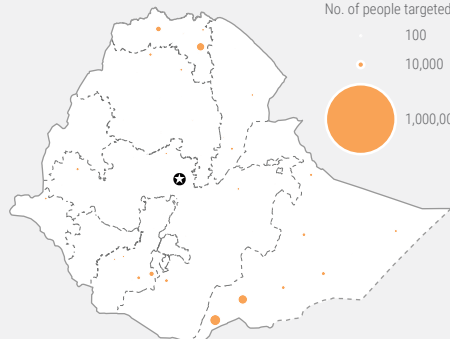
US\$ required

No. of people targeted

100

10,000

1,000,000



CCCM cluster partners in 2023 are planning to:

- Ensure care and maintenance of the site's infrastructure
- Promote the protection, safety, and dignity of conflict and disaster affected people
- Provide CCCM capacity building support to staff and authorities interventions
- Support establishment of inclusive and representative community structures

Education

10.3M

People in need



3.8M

People targeted

161.4M

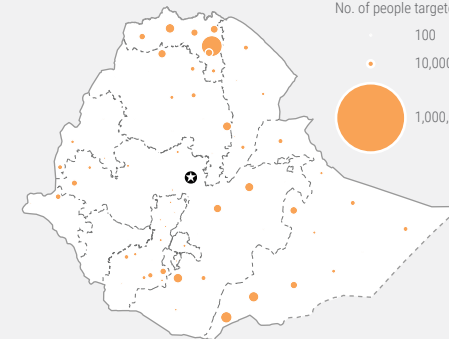
US\$ required

No. of people targeted

100

10,000

1,000,000



Education cluster partners in 2023 are planning to:

- Ensure that learning environments safeguard children, coordinate provision of life-saving interventions, and disseminate lifesaving messages
- Ensure equitable, non-discriminatory access to protective and inclusive (pre-primary and primary) learning environments
- Provide quality education (formal and non-formal) in a non-discriminatory manner
- Strengthen the capacity of key education personnel

Emergency Shelter and Non-Food Items

5.4M

People in need



3.9M

People targeted

134.7M

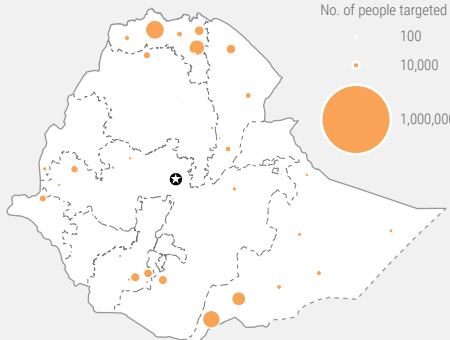
US\$ required

No. of people targeted

100

10,000

1,000,000



ESNFI cluster partners in 2023 are planning to:

- Ensure that crisis-affected people have equitable access to adequate and environmental shelter solutions
- Increase equitable, safe, and inclusive access to appropriate emergency shelter and household's necessities
- Enhance resilience through shelter and settlement support in recovery, reintegration, and relocation

Food

20.1M

People in need



20.1M

People targeted

2,165.0M

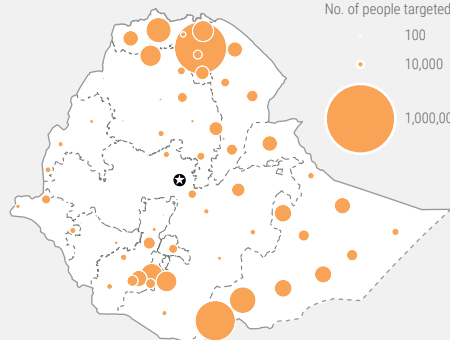
US\$ required

No. of people targeted

100

10,000

1,000,000



Food cluster partners in 2023 are planning to:

- Save lives and protect livelihoods of acute food insecure people through timely provision of cash/food assistance.

Health

17.4M

People in need



9.8M

People targeted

303.5M

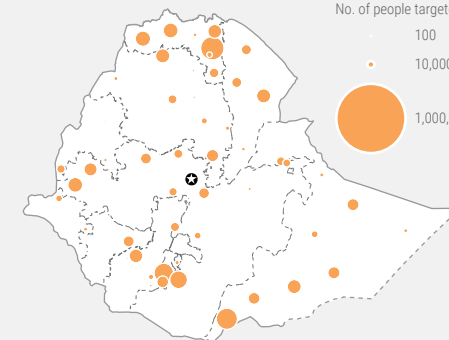
US\$ required

No. of people targeted

100

10,000

1,000,000

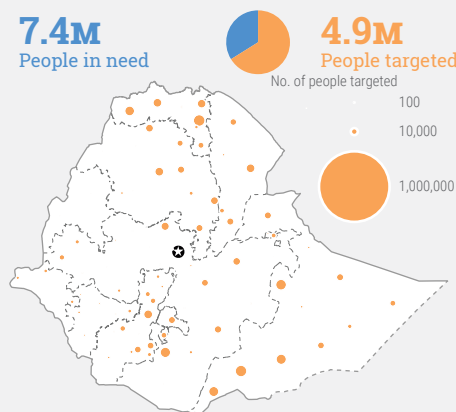


Health cluster partners in 2023 are planning to:

- Ensure equitable access to life-saving essential healthcare services, including sexual and reproductive health services, child health, mental health, trauma care, communicable and non-communicable diseases, to all persons in need
- Ensure operational readiness for early detection, investigation and response to health emergencies
- Support recovery and restoration of essential health services disrupted or

Nutrition

7.4M People in need
4.9M People targeted
359.2M US\$ required

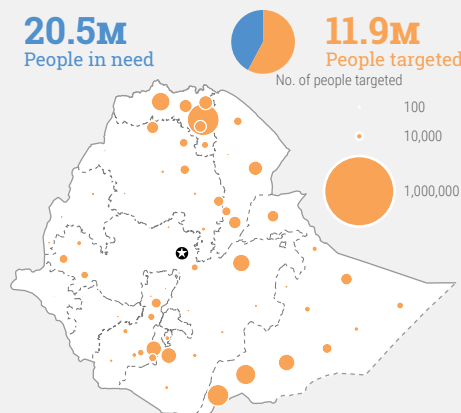


Nutrition cluster partners in 2023 are planning to:

- Extend the coverage, improve quality, and timeliness of life saving nutrition interventions
- Adapt the nutrition response and interventions for humanitarian action to reach populations in greatest need
- Enhance preparedness capacity, boost nutrition early warning mechanisms and develop a robust monitoring and prioritization system
- Reduce burden of wasting by promoting a scalable and affordable package of interventions with intersectoral collaboration

Water, Sanitation and Hygiene

20.5M People in need
11.9M People targeted
164.1M US\$ required

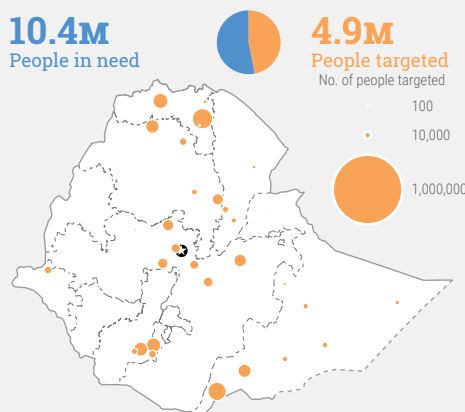


WASH cluster partners in 2023 are planning to:

- Ensure that affected people in need of life saving WASH services receive a timely, equitable and safe, life-saving and effective emergency WASH assistance
- Ensure that people affected by crisis have access to resilient and sustainable WASH services

Protection

10.4M People in need
4.9M People targeted
344.5M US\$ required



Protection cluster partners in 2023 are planning to:

- Prevent harm to persons at risk of or mitigate harm to persons who have suffered life-threatening events, violence, abuse or serious neglect, and support the restoration of people's capacity to live a safe and dignified life
- Provide protection assistance and specialized life-sustaining protection services
- Strengthen and implement community-based responses, resilience activities, and durable solutions
- Enhance protection mainstreaming across sectors incorporating protection principles into humanitarian aid delivery

Coordination and Common Services

18.9M US\$ required

Coordination & Common Services cluster partners in 2023 are planning to:

- Adapt the coordination mechanism to the context and ensure that strategic and operational humanitarian decision making is coordinated, inclusive, and accountable
- Promote, coordinate, and harmonize timely, relevant, evidence-based multi-sectoral information management, analysis, advocacy and needs assessments
- Enhance operational impact and scope and contribute to safety and security of humanitarian response and workers
- Improve the response monitoring and situation monitoring

Child Protection **7.0M** People in need
2.1M People targeted
95.5M US\$ required

CP AoR partners in 2023 are planning to strengthen community-based child protection networks, localization and rapid deployment of CP resources addressing urgent protection needs arising from renewed hostilities or sudden displacement, and providing initial measures, in line with Child Protection minimum assistance package.

Gender Based Violence **6.7M** People in need
2.7M People targeted
108.8M US\$ required

GBV AoR partners in 2023 are planning to target populations living in areas with severe GBV risks and huge gaps in quality multi-sectoral response services. Women and girls will be the main target for GBV response services, guided by the IASC GBV Minimum standards as well as survivor centered, human rights and community-based approaches, with community mobilization targeting the wider community.

Mine Action **7.0M** People in need
703k People targeted
10.1M US\$ required

Mine Action AoR partners in 2023 are planning to protect communities from the risks of mines and explosive ordnance (EO) through conducting assessments and marking contaminated sites where possible, awareness raising and community engagement on Explosive Ordnance Risk Education, and providing assistance to survivors of mines and EO incidents and their family members.

Housing Land & Property **3.1M** People in need
460k People targeted
4.1M US\$ required

HLP WG partners in 2023 are planning to facilitate a more systematic approach to identifying, understanding and addressing HLP issues affecting people of concern and directly impacting the work of the sectors at national and sub-national levels. This will be done by promoting collaboration and complementarity of efforts amongst government entities and agencies undertaking HLP activities and by addressing identified gaps in technical areas.

Logistics **24.8M** US\$ required

Logistics cluster partners in 2023 are planning to:

- Facilitate and streamline the access to logistics services,
- Provide capacity strengthening opportunities through logistics trainings,
- Provide information management and coordination to the humanitarian community of the Northern Ethiopia Response,
- Through UNHAS; facilitate the access to logistics services for the entire humanitarian community



HOW TO CONTRIBUTE

Photo: 11 July 2022. Genete Mariam IDP site, Gelgel Beles, North-Eastern Benishangul Gumuz Region. Tents leak during the rainy season and most at the site have not received a ration of wheat for at least 3-4 months.
Credit: Liz Loh-Taylor for OCHA Ethiopia

Central Emergency Response Fund

The CERF provides rapid initial funding for life-saving actions at the onset of emergencies and for poorly funded, essential humanitarian operations in protracted crises. The OCHA-managed CERF receives contributions from various donors – mainly governments, but also private companies, foundations, charities and individuals – which are combined into a single fund. This is used for crises anywhere in the world.

cerf.un.org/donate

Ethiopia Humanitarian Fund

The Ethiopia Humanitarian Fund (EHF) is a country-based pooled fund (CBPF). CBPFs are multi-donor humanitarian financing instruments established by the Emergency Relief Coordinator (ERC) and managed by OCHA, at the country level under the leadership of the Humanitarian Coordinator (HC).

www.unocha.org/ethiopia/about-ehf

Government of Ethiopia

The Government of Ethiopia has a risk financing mechanism for humanitarian and development interventions. Bilateral financial support directly targeting the Government of Ethiopia can be made through this channel.

www.edrmc.gov.et

GET THE LATEST UPDATES



ReliefWeb aims to be the central website for Information Management tools and services, enabling information exchange between clusters and IASC members operating within a protracted or sudden onset crisis.

reliefweb.int/country/eth

Humanitarian Action

ANALYSING NEEDS AND RESPONSE

Humanitarian Action supports decision-makers by giving them access to key humanitarian data. It provides the latest verified information on needs and delivery of the humanitarian response as well as financial contributions.

humanitarianaction.info/plan/1128



The Financial Tracking Service (FTS) is the primary provider of continuously updated data on global humanitarian funding, and is a major contributor to strategic decision making by highlighting gaps and priorities, thus contributing to effective, efficient and principled humanitarian assistance.

fts.unocha.org/appeals/1128/summary